

LEVEL 6

Stratum Lot  
**4**

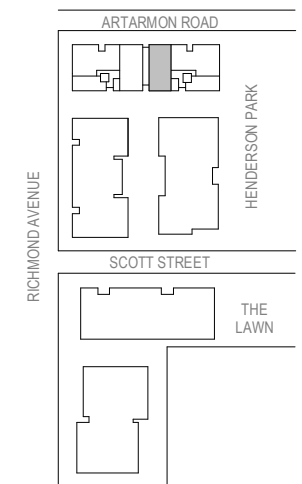
Strata Lot  
**27**

Colour Scheme: Penthouse  
Floor Finish: Timber

**THREE BEDROOM PENTHOUSE  
APARTMENT**

Unit Area 139 m<sup>2</sup>  
Balcony Area 24 m<sup>2</sup>  
Total Area 163 m<sup>2</sup>

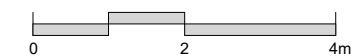
Areas subject to final survey. Area includes balcony, winter garden and courtyard where applicable. Area excludes associated parking and external storage areas.



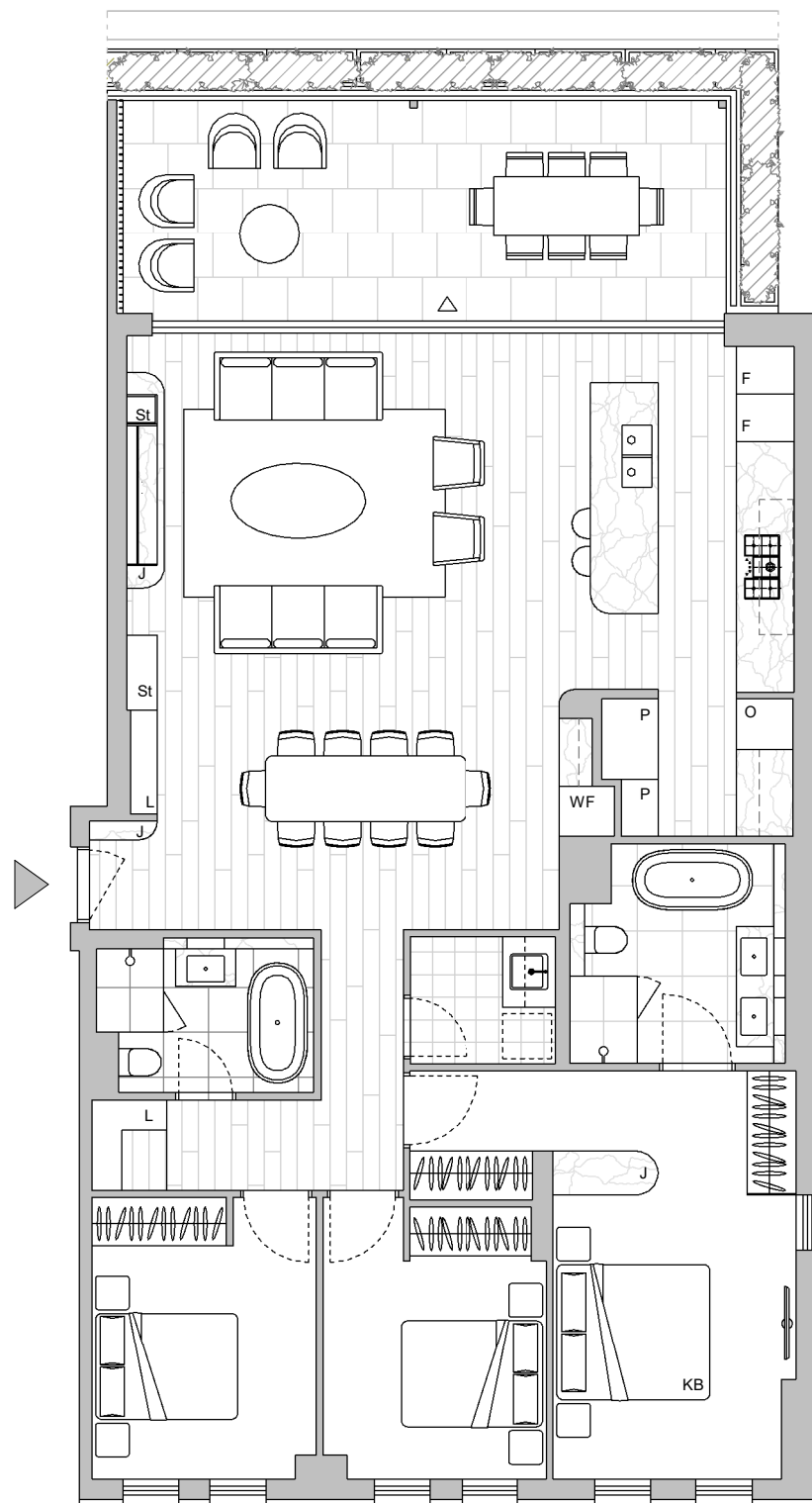
Legend - As Applicable

- |                   |                           |            |
|-------------------|---------------------------|------------|
| ▲ Access          | F Fridge                  | J Joinery  |
| △ Balcony Access  | O Wall Oven               | L Linen    |
| ** Sliding Screen | WF Wine Fridge            | St Storage |
| * Fixed Screen    | Planting maintained by OC | P Pantry   |

Provision of a water point, GPO (power point) and gas point has been made available to the balcony.



This floor plan was produced prior to construction and while the information contained herein is believed to be correct it is not guaranteed. Changes will undoubtedly be made in accordance with the contract for sale. The plan does not show additional features such as hot water systems, services, or Bulkheads necessary for services. Dimensions, areas, and scale of floor plans are approximate only and subject to the terms of the Contract. Areas calculated in accordance with the Strata Schemes Development Act 2015. The furniture and furnishings depicted are not included with any sale. Purchasers must refer to the contract for sale for the list of inclusions. Furnishings should not be taken to indicate the final position of power points, TV connection points and the like. All graphics, including design and extent of tile/paver/carpet areas, landscaping, balustrades, louvres, sun shading devices, privacy screens and services equipment are for illustrative purposes only and are not to be relied on as a representative of the final product. Plans do not show additional features within each lot such as letterboxes and side and rear retaining walls. All level changes in the courtyards may not have been shown.



LEVEL 6

Stratum Lot  
**4**

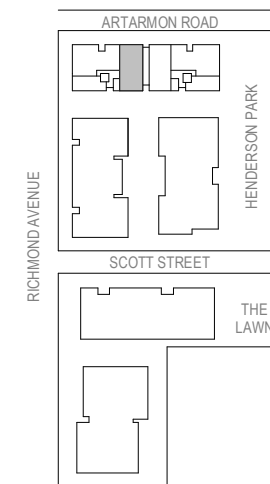
Strata Lot  
**28**

Colour Scheme: Penthouse  
Floor Finish: Timber

**THREE BEDROOM PENTHOUSE  
APARTMENT**

Unit Area 139 m<sup>2</sup>  
Balcony Area 24 m<sup>2</sup>  
Total Area 163 m<sup>2</sup>

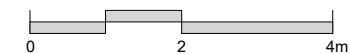
Areas subject to final survey. Area includes balcony, winter garden and courtyard where applicable. Area excludes associated parking and external storage areas.



Legend - As Applicable

- |                   |                           |            |
|-------------------|---------------------------|------------|
| ▲ Access          | F Fridge                  | J Joinery  |
| △ Balcony Access  | O Wall Oven               | L Linen    |
| ** Sliding Screen | WF Wine Fridge            | St Storage |
| * Fixed Screen    | Planting maintained by OC | P Pantry   |
| KB King Bed       |                           |            |

Provision of a water point, GPO (power point) and gas point has been made available to the balcony.



This floor plan was produced prior to construction and while the information contained herein is believed to be correct it is not guaranteed. Changes will undoubtedly be made in accordance with the contract for sale. The plan does not show additional features such as hot water systems, services, or Bulkheads necessary for services. Dimensions, areas, and scale of floor plans are approximate only and subject to the terms of the Contract. Areas calculated in accordance with the Strata Schemes Development Act 2015. The furniture and furnishings depicted are not included with any sale. Purchasers must refer to the contract for sale for the list of inclusions. Furnishings should not be taken to indicate the final position of power points, TV connection points and the like. All graphics, including design and extent of tile/paver/carpet areas, landscaping, balustrades, louvres, sun shading devices, privacy screens and services equipment are for illustrative purposes only and are not to be relied on as a representative of the final product. Plans do not show additional features within each lot such as letterboxes and side and rear retaining walls. All level changes in the courtyards may not have been shown.

Stratum Lot  
**4**

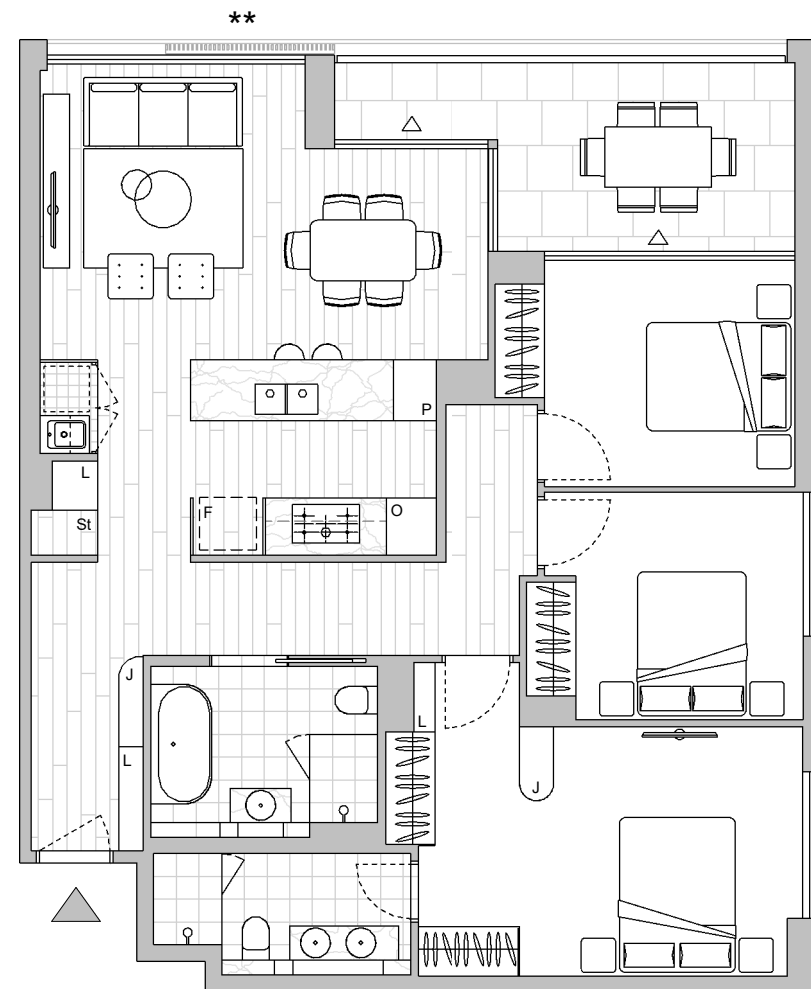
Strata Lot  
**7**

Colour Scheme: Premium B  
Floor Finish: Timber

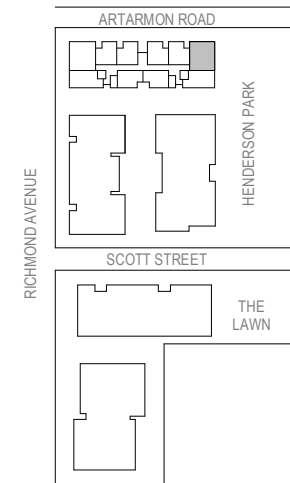
### THREE BEDROOM APARTMENT

Unit Area 103 m<sup>2</sup>  
Balcony Area 12 m<sup>2</sup>  
Total Area 115 m<sup>2</sup>

Areas subject to final survey. Area includes balcony, winter garden and courtyard where applicable. Area excludes associated parking and external storage areas.



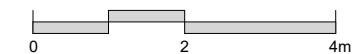
LEVEL 4



Legend - As Applicable

- |                   |             |            |
|-------------------|-------------|------------|
| ▲ Access          | F Fridge    | J Joinery  |
| △ Balcony Access  | P Pantry    | L Linen    |
| ** Sliding Screen | O Wall Oven | St Storage |
| * Fixed Screen    |             |            |

Provision of a water point, GPO (power point) and gas point has been made available to the balcony.



This floor plan was produced prior to construction and while the information contained herein is believed to be correct it is not guaranteed. Changes will undoubtedly be made in accordance with the contract for sale. The plan does not show additional features such as hot water systems, services, or Bulkheads necessary for services. Dimensions, areas, and scale of floor plans are approximate only and subject to the terms of the Contract. Areas calculated in accordance with the Strata Schemes Development Act 2015. The furniture and furnishings depicted are not included with any sale. Purchasers must refer to the contract for sale for the list of inclusions. Furnishings should not be taken to indicate the final position of power points, TV connection points and the like. All graphics, including design and extent of tile/paver/carpet areas, landscaping, balustrades, louvres, sun shading devices, privacy screens and services equipment are for illustrative purposes only and are not to be relied on as a representative of the final product. Plans do not show additional features within each lot such as letterboxes and side and rear retaining walls. All level changes in the courtyards may not have been shown.

Stratum Lot  
**4**

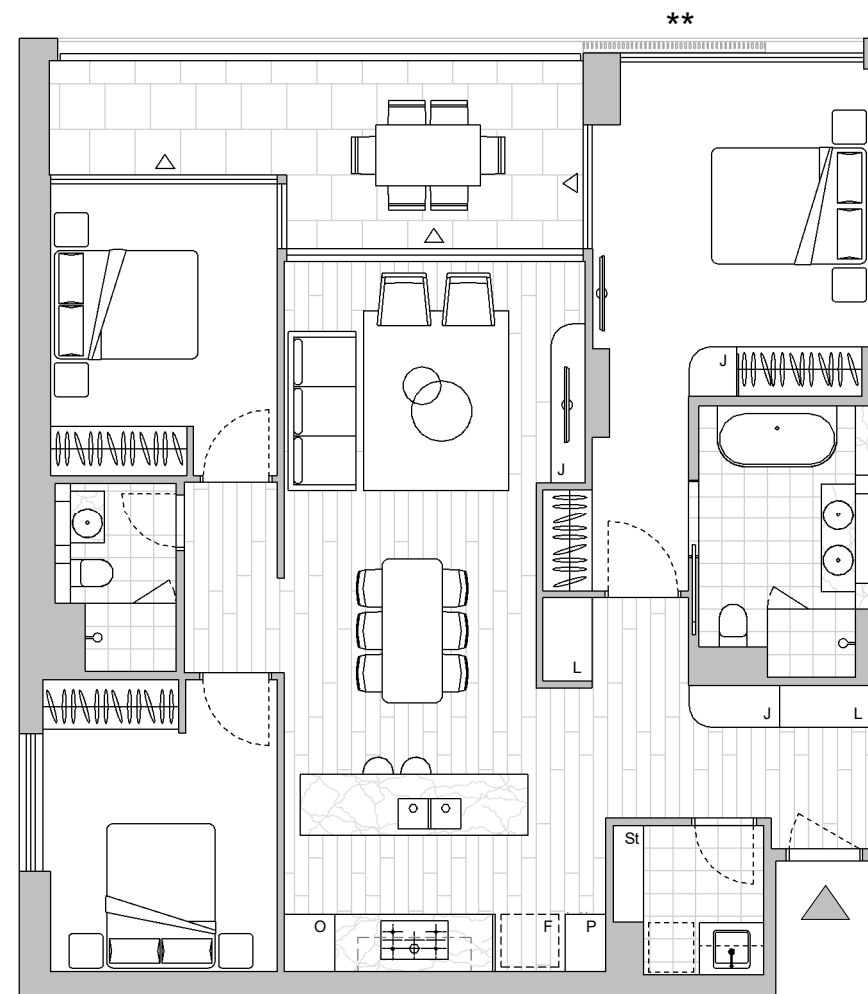
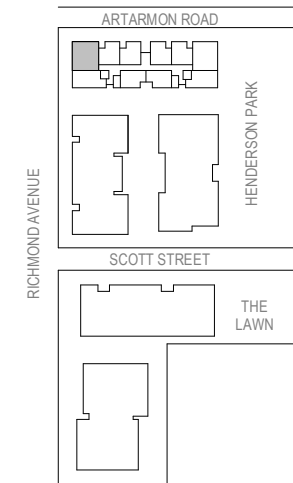
Strata Lot  
**12**

Colour Scheme: Premium C  
Floor Finish: Timber

### THREE BEDROOM APARTMENT

Unit Area 110 m<sup>2</sup>  
Balcony Area 14 m<sup>2</sup>  
Total Area 124 m<sup>2</sup>

Areas subject to final survey. Area includes balcony, winter garden and courtyard where applicable. Area excludes associated parking and external storage areas.

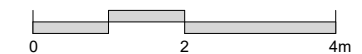


LEVEL 4

Legend - As Applicable

- |                   |             |            |
|-------------------|-------------|------------|
| ▲ Access          | F Fridge    | J Joinery  |
| △ Balcony Access  | P Pantry    | L Linen    |
| ** Sliding Screen | O Wall Oven | St Storage |
| * Fixed Screen    |             |            |

Provision of a water point, GPO (power point) and gas point has been made available to the balcony.



This floor plan was produced prior to construction and while the information contained herein is believed to be correct it is not guaranteed. Changes will undoubtedly be made in accordance with the contract for sale. The plan does not show additional features such as hot water systems, services, or Bulkheads necessary for services. Dimensions, areas, and scale of floor plans are approximate only and subject to the terms of the Contract. Areas calculated in accordance with the Strata Schemes Development Act 2015. The furniture and furnishings depicted are not included with any sale. Purchasers must refer to the contract for sale for the list of inclusions. Furnishings should not be taken to indicate the final position of power points, TV connection points and the like. All graphics, including design and extent of tile/paver/carpet areas, landscaping, balustrades, louvres, sun shading devices, privacy screens and services equipment are for illustrative purposes only and are not to be relied on as a representative of the final product. Plans do not show additional features within each lot such as letterboxes and side and rear retaining walls. All level changes in the courtyards may not have been shown.

Stratum Lot  
**4**

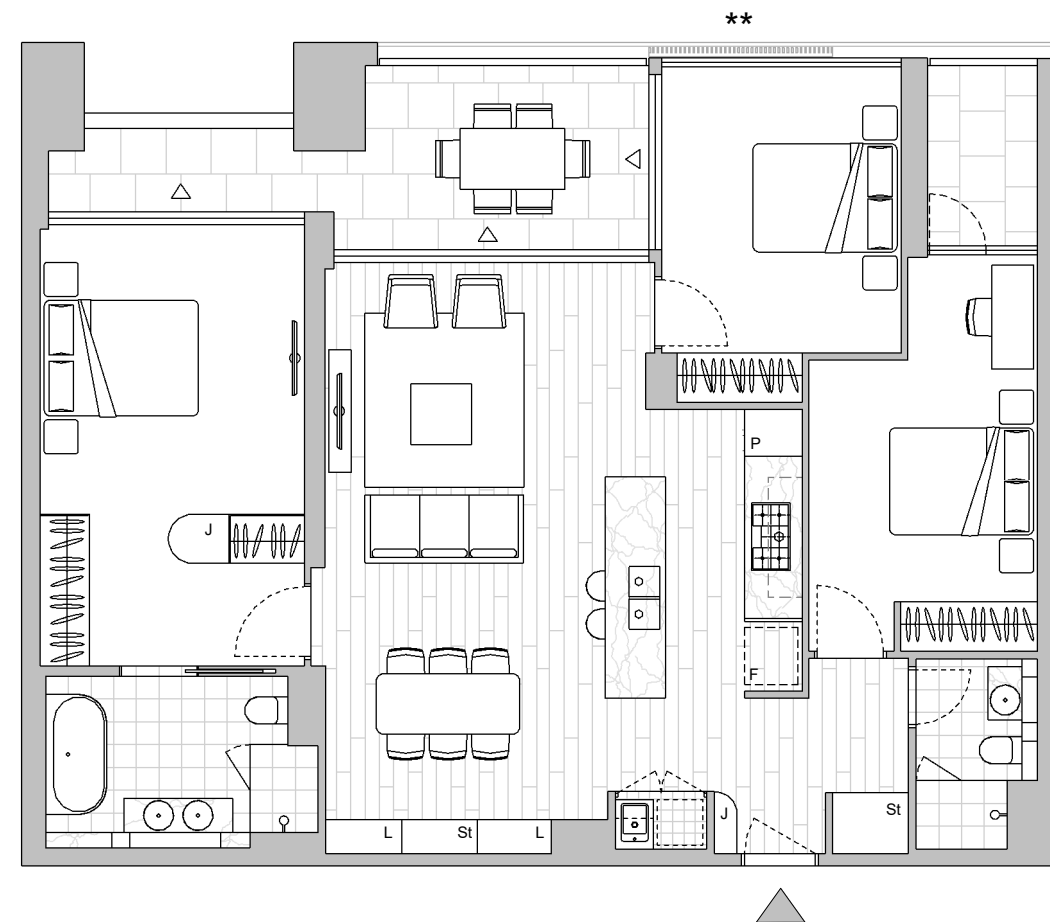
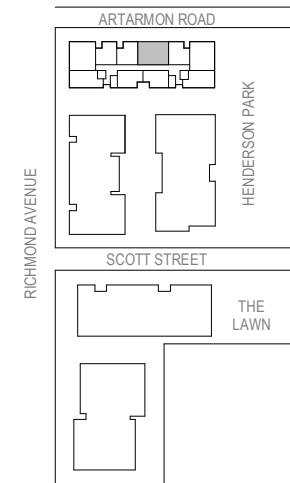
Strata Lot  
**15**

Colour Scheme: Premium A  
Floor Finish: Timber

**THREE BEDROOM APARTMENT**

Unit Area 110 m<sup>2</sup>  
Balcony Area 17 m<sup>2</sup>  
Total Area 127 m<sup>2</sup>

Areas subject to final survey. Area includes balcony, winter garden and courtyard where applicable. Area excludes associated parking and external storage areas.

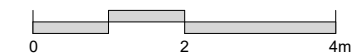


**LEVEL 5**

Legend - As Applicable

- |                   |             |            |
|-------------------|-------------|------------|
| ▲ Access          | F Fridge    | J Joinery  |
| △ Balcony Access  | P Pantry    | L Linen    |
| ** Sliding Screen | O Wall Oven | St Storage |
| * Fixed Screen    |             |            |

Provision of a water point, GPO (power point) and gas point has been made available to the balcony.



This floor plan was produced prior to construction and while the information contained herein is believed to be correct it is not guaranteed. Changes will undoubtedly be made in accordance with the contract for sale. The plan does not show additional features such as hot water systems, services, or Bulkheads necessary for services. Dimensions, areas, and scale of floor plans are approximate only and subject to the terms of the Contract. Areas calculated in accordance with the Strata Schemes Development Act 2015. The furniture and furnishings depicted are not included with any sale. Purchasers must refer to the contract for sale for the list of inclusions. Furnishings should not be taken to indicate the final position of power points, TV connection points and the like. All graphics, including design and extent of tile/paver/carpet areas, landscaping, balustrades, louvres, sun shading devices, privacy screens and services equipment are for illustrative purposes only and are not to be relied on as a representative of the final product. Plans do not show additional features within each lot such as letterboxes and side and rear retaining walls. All level changes in the courtyards may not have been shown.

Stratum Lot  
**4**

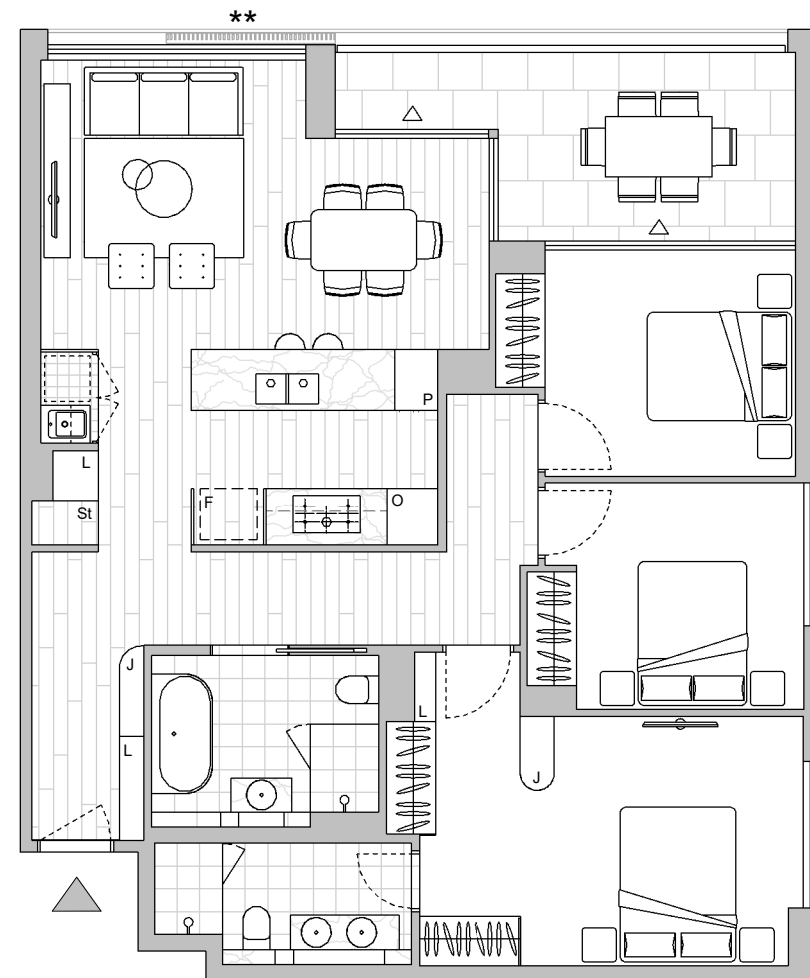
Strata Lot  
**17**

Colour Scheme: Premium A  
Floor Finish: Timber

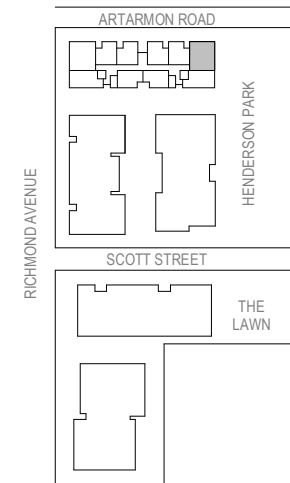
### THREE BEDROOM APARTMENT

Unit Area 103 m<sup>2</sup>  
Balcony Area 12 m<sup>2</sup>  
Total Area 115 m<sup>2</sup>

Areas subject to final survey. Area includes balcony, winter garden and courtyard where applicable. Area excludes associated parking and external storage areas.



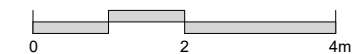
LEVEL 5



Legend - As Applicable

- |                   |             |            |
|-------------------|-------------|------------|
| ▲ Access          | F Fridge    | J Joinery  |
| △ Balcony Access  | P Pantry    | L Linen    |
| ** Sliding Screen | O Wall Oven | St Storage |
| * Fixed Screen    |             |            |

Provision of a water point, GPO (power point) and gas point has been made available to the balcony.



This floor plan was produced prior to construction and while the information contained herein is believed to be correct it is not guaranteed. Changes will undoubtedly be made in accordance with the contract for sale. The plan does not show additional features such as hot water systems, services, or Bulkheads necessary for services. Dimensions, areas, and scale of floor plans are approximate only and subject to the terms of the Contract. Areas calculated in accordance with the Strata Schemes Development Act 2015. The furniture and furnishings depicted are not included with any sale. Purchasers must refer to the contract for sale for the list of inclusions. Furnishings should not be taken to indicate the final position of power points, TV connection points and the like. All graphics, including design and extent of tile/paver/carpet areas, landscaping, balustrades, louvres, sun shading devices, privacy screens and services equipment are for illustrative purposes only and are not to be relied on as a representative of the final product. Plans do not show additional features within each lot such as letterboxes and side and rear retaining walls. All level changes in the courtyards may not have been shown.

Stratum Lot  
**4**

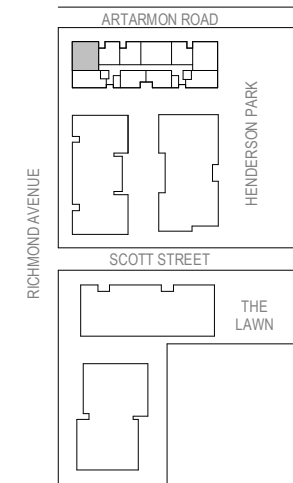
Strata Lot  
**22**

Colour Scheme: Premium B  
Floor Finish: Timber

### THREE BEDROOM APARTMENT

Unit Area 110 m<sup>2</sup>  
Balcony Area 14 m<sup>2</sup>  
Total Area 124 m<sup>2</sup>

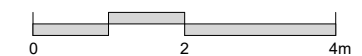
Areas subject to final survey. Area includes balcony, winter garden and courtyard where applicable. Area excludes associated parking and external storage areas.



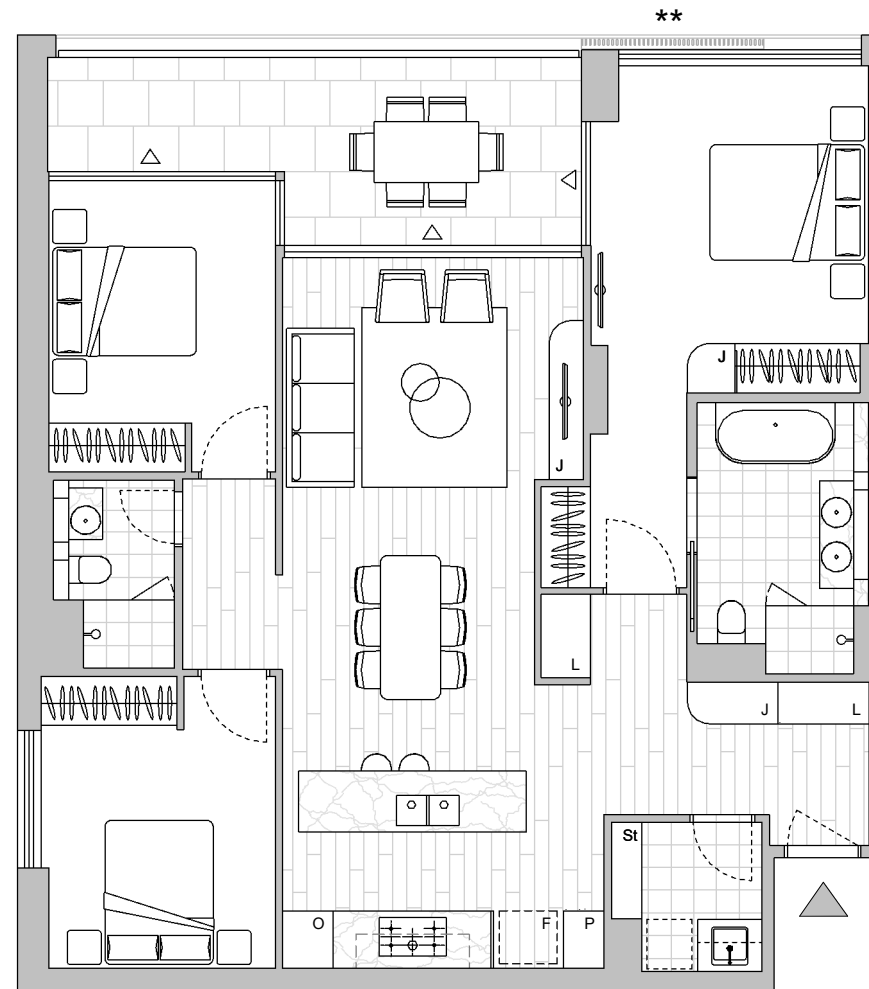
Legend - As Applicable

- |                   |             |            |
|-------------------|-------------|------------|
| ▲ Access          | F Fridge    | J Joinery  |
| △ Balcony Access  | P Pantry    | L Linen    |
| ** Sliding Screen | O Wall Oven | St Storage |
| * Fixed Screen    |             |            |

Provision of a water point, GPO (power point) and gas point has been made available to the balcony.



This floor plan was produced prior to construction and while the information contained herein is believed to be correct it is not guaranteed. Changes will undoubtedly be made in accordance with the contract for sale. The plan does not show additional features such as hot water systems, services, or Bulkheads necessary for services. Dimensions, areas, and scale of floor plans are approximate only and subject to the terms of the Contract. Areas calculated in accordance with the Strata Schemes Development Act 2015. The furniture and furnishings depicted are not included with any sale. Purchasers must refer to the contract for sale for the list of inclusions. Furnishings should not be taken to indicate the final position of power points, TV connection points and the like. All graphics, including design and extent of tile/paver/carpet areas, landscaping, balustrades, louvres, sun shading devices, privacy screens and services equipment are for illustrative purposes only and are not to be relied on as a representative of the final product. Plans do not show additional features within each lot such as letterboxes and side and rear retaining walls. All level changes in the courtyards may not have been shown.



**LEVEL 5**

Stratum Lot  
**4**

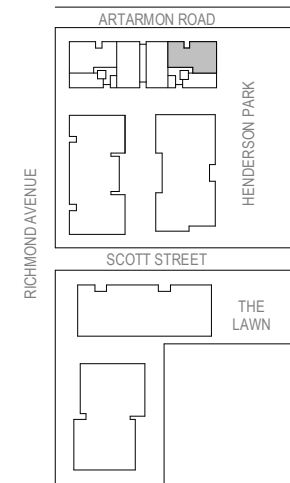
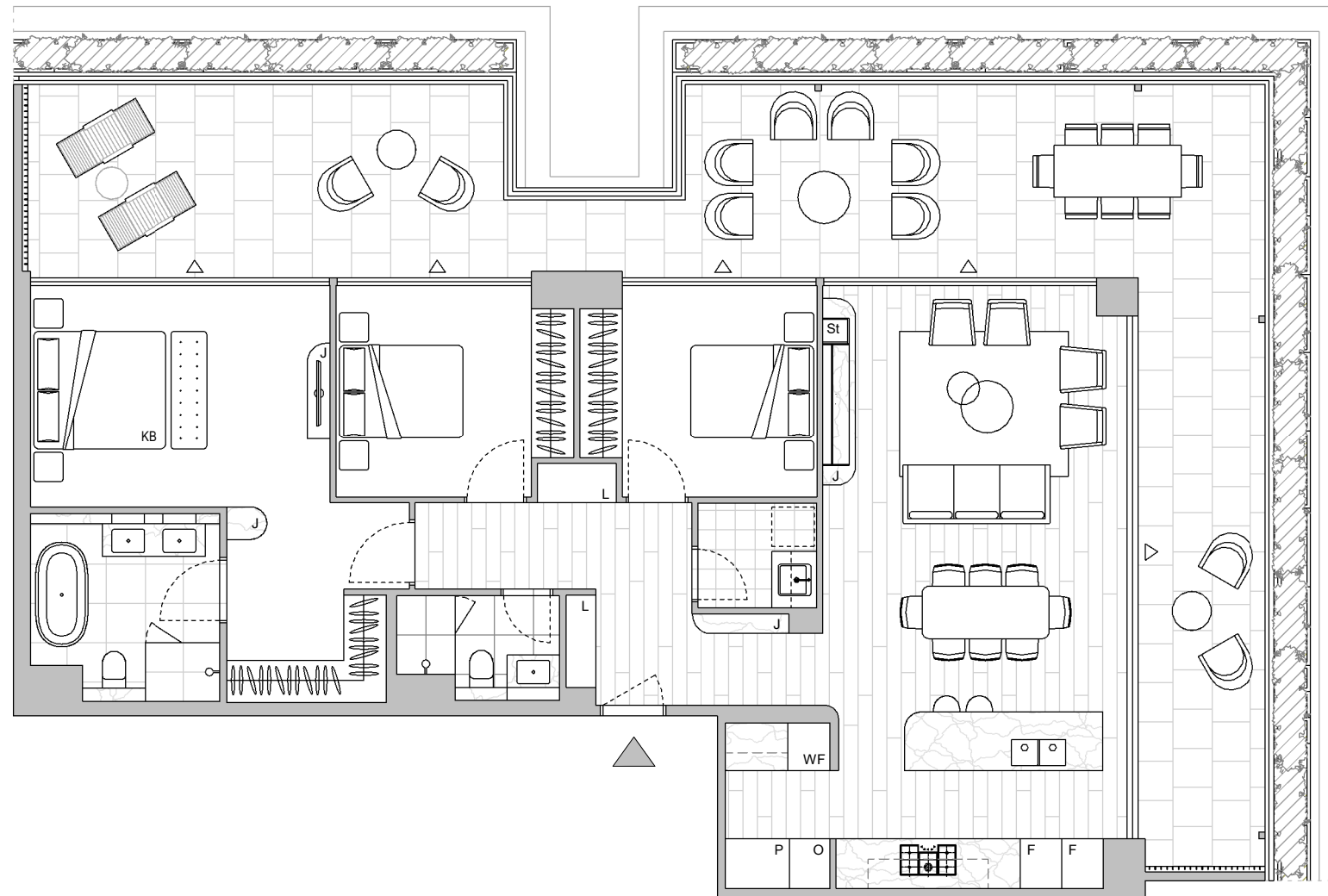
Strata Lot  
**25**

Colour Scheme: Penthouse  
Floor Finish: Timber

**THREE BEDROOM PENTHOUSE  
APARTMENT**

Unit Area 123 m<sup>2</sup>  
Balcony Area 69 m<sup>2</sup>  
Total Area 192 m<sup>2</sup>

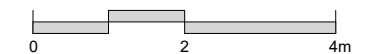
Areas subject to final survey. Area includes balcony, winter garden and courtyard where applicable. Area excludes associated parking and external storage areas.



Legend - As Applicable

- |                   |                             |            |
|-------------------|-----------------------------|------------|
| ▲ Access          | F Fridge                    | J Joinery  |
| △ Balcony Access  | O Wall Oven                 | L Linen    |
| ** Sliding Screen | WF Wine Fridge              | St Storage |
| * Fixed Screen    | ▨ Planting maintained by OC | P Pantry   |
| KB King Bed       |                             |            |

Provision of a water point, GPO (power point) and gas point has been made available to the balcony.



**LEVEL 6**

This floor plan was produced prior to construction and while the information contained herein is believed to be correct it is not guaranteed. Changes will undoubtedly be made in accordance with the contract for sale. The plan does not show additional features such as hot water systems, services, or Bulkheads necessary for services. Dimensions, areas, and scale of floor plans are approximate only and subject to the terms of the Contract. Areas calculated in accordance with the Strata Schemes Development Act 2015. The furniture and furnishings depicted are not included with any sale. Purchasers must refer to the contract for sale for the list of inclusions. Furnishings should not be taken to indicate the final position of power points, TV connection points and the like. All graphics, including design and extent of tile/paver/carpet areas, landscaping, balustrades, louvres, sun shading devices, privacy screens and services equipment are for illustrative purposes only and are not to be relied on as a representative of the final product. Plans do not show additional features within each lot such as letterboxes and side and rear retaining walls. All level changes in the courtyards may not have been shown.